



# CERTIFICATE OF ANALYSIS

PREPARED FOR:



RELIV INTERNATIONAL, INC.

136 CHESTERFIELD INDUSTRIAL BLVD.  
CHESTERFIELD, MO 63005

THIS REPORT IS FOR A FULL BATCH TESTING  
LABORATORY BATCH ID: RLV-FS500.010

Including Batch & Fill Lot ID:

19LL191A11



SS|BioMed, Inc. • Frisco, TX 75034

©2019 All rights reserved.

# RLV 500 mg FULL SPECTRUM EXTRACT

Batch ID: RLV-FS500.19LL191A11  
 Received: 04-Oct-2019  
 Matrix: Concentrates/Extracts

Certificate ID: 100919SR003  
 Test Type: Potency  
 Method: Tested in accordance of the requirements of ISO/IEC 17025:2005/2017



The data presented in this report has been reviewed in an accredited laboratory. I attest that the information herein has been checked for accuracy and against quality control requirements for each test method used. These results pertain only to the test materials listed in this report. This report may not be reproduced except in its complete entirety.

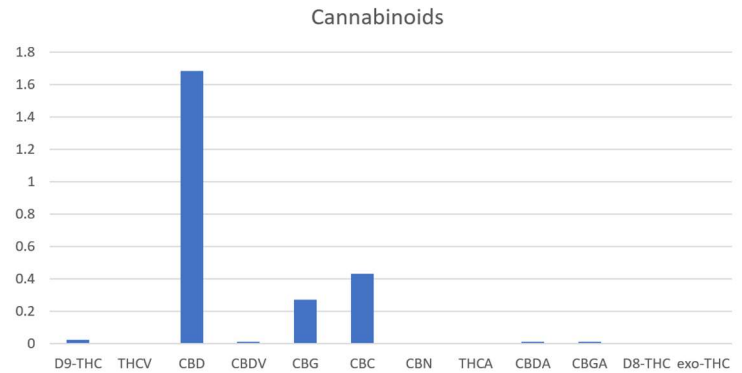
Dan Krist

*Dan Krist*  
 Lab Manager  
 SS BioMed, Inc.

## T1: CANNABINOID PROFILE & POTENCY

The tested sample was analyzed (by Liquid Chromatography, LC) for plant-based cannabinoids. All collected data was compared to laboratory certified reference standards at known concentrations.

ID	Weight %	Conc. mg/mL
D9-THC	.023	0.23
THCV	ND	ND
CBD	1.6882	16.88
CBDV	trace	trace
CBG	.029	0.29
CBC	.041	0.41
CBN	ND	ND
THCA	ND	ND
CBDA	trace	trace
CBGA	trace	trace
D8-THC	ND	ND
exo-THC	ND	ND



**TOTAL:** 1.7812 17.81 mg/mL  
**Max THC:** 0.0230 0.230 mg/mL  
**Max CBD:** 1.6882 16.88 mg/mL

Max THC and Max CBD are calculated values for total cannabinoids assuming complete decarboxylation of the acid to the neutral form. Calculation is based on the weight loss of the acid group during decarboxylation. **THC Minimum Detectable Limit** = 0.001 ng/mL  
**ND** = None detected above the limits of detection (LLD)  
**trace** = <0.015 mg/mL



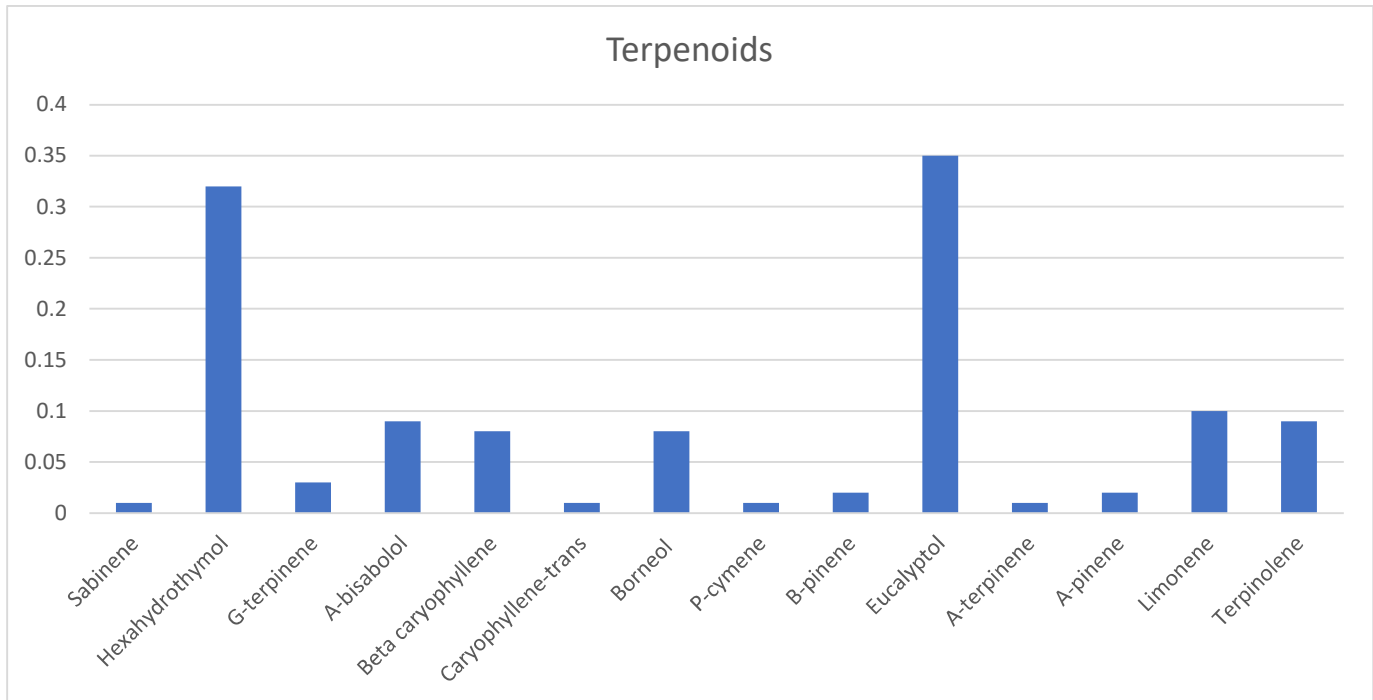
SS | BioMed, Inc. • Frisco, TX 75034

**T2: TERPENE PROFILE**

The tested sample was analyzed (by Head Space Gas Chromatography, HS-GC) for plant-based terpenoids. All collected data was compared to laboratory certified reference standards at known concentrations.

ID	Weight %	Conc. mg/mL	ID	Weight %	Conc. mg/mL
a-Phellandrene	0.000	0.00	Guaiol	0.000	0.00
Fenchone	0.000	0.00	Humulene	0.000	0.00
Sabinene	0.001	0.01	p-Cymene	0.001	0.01
h-Hydrothymol	0.031	0.31	Camphene	0.000	0.00
Myrcene	0.000	0.00	b-Pinene	0.002	0.02
Isopulegol	0.000	0.00	Eucalyptol	0.035	0.35
Nerolidol-cis	0.000	0.00	a-Terpinene	0.001	0.01
g-Terpinene	0.003	0.03	3-Carene	0.000	0.00
Nerolidol-trans	0.000	0.00	a-Pinene	0.002	0.02
a-Bisabolol	0.010	0.10	Limonene	0.010	0.10
Linalool	0.000	0.00	Geraniol	0.000	0.00
beta Caryophyllene	0.009	0.09	Ocimene-1	0.000	0.00
Caryophyllene-trans	0.001	0.01	Ocimene-2	0.000	0.00
Borneol	0.005	0.05	Terpinolene	0.009	0.09

**TOTAL WT %:** 0.120%



SS | BioMed, Inc. • Frisco, TX 75034

©2019 All rights reserved.

	Limits	Result	Status
<b>T3: Microbiological Contaminants<sup>1</sup></b>			
Total Aerobic Bacterial Count	10,000 CFU/g	Conforms	PASS
Total Coliform Bacterial Count	100 CFU/g	Conforms	PASS
Total Yeast & Mold	1,000 CFU/g	Conforms	PASS
<b>T4: Pathogenic Bacterial Contaminants<sup>1</sup></b>			
E. Coli (O157)	NA	Negative	PASS
Salmonella	NA	Negative	PASS
<b>T5: Heavy Metal Analysis</b>			
using Inductively Coupled Plasma Mass Spectrometry (ICP-MS)			
Arsenic	<2 ppm	Conforms	PASS
Cadmium	<2 ppm	Conforms	PASS
Lead	<1 ppm	Conforms	PASS
Mercury	<1 ppm	Conforms	PASS
<b>T6: Pesticide Analysis</b>			
using Liquid Chromatography with Mass Spectrometry (LC/MS)			
Abamectin	300 ppb	None Detected	PASS
Abamectin B1b	300 ppb	None Detected	PASS
Azoxystrobin	40,000 ppb	None Detected	PASS
Bifenazate	5,000 ppb	None Detected	PASS
Bifenthrin	500 ppb	None Detected	PASS
Cyfluthrin	1,000 ppb	None Detected	PASS
Daminozide	10 ppb	None Detected	PASS
Etoxazole	1,500 ppb	None Detected	PASS
Fenoxycarb	10 ppb	None Detected	PASS
Imazalil	10 ppb	None Detected	PASS
Imidacloprid	3,000 ppb	None Detected	PASS
Myclobutanil	9,000 ppb	None Detected	PASS
Paclbutrazol	10 ppb	None Detected	PASS
Piperonyl butoxide	8,000 ppb	None Detected	PASS
Pyrethrin	1,000 ppb	None Detected	PASS
Spinosad	3,000 ppb	None Detected	PASS
Spiromesifen	12,000 ppb	None Detected	PASS
Spirotetramat	13,000 ppb	None Detected	PASS
Trifloxystrobin	30,000 ppb	None Detected	PASS

	Potency	Results per 30mL	Status
<b>T7: Active Diols</b>			
using Liquid Chromatography (LC)			
CBD	16.88 mg/serving	506.4 mg	PASS
D-9 THC	0.23 mg/serving	6.9 mg	PASS
CBC	0.41 mg/serving	12.3 mg	PASS
CBG	0.29 mg/serving	8.7 mg	PASS

<sup>1</sup>Contaminant detection testing in accordance with AOAC – OMA #2014.05, USP 2021, and USP 2022

**-END OF REPORT-**



SS | BioMed, Inc. • Frisco, TX 75034

©2019 All rights reserved.